

**Goat Anti-CBX3 / HP1 Gamma Antibody**  
**Peptide-affinity purified goat antibody**  
**Catalog # AF1204a****Specification**

---

**Goat Anti-CBX3 / HP1 Gamma Antibody - Product Information**

Application	WB, IHC, E
Primary Accession	<a href="#">Q13185</a>
Other Accession	<a href="#">NP_057671</a> , <a href="#">11335</a> , <a href="#">12417 (mouse)</a> , <a href="#">297093 (rat)</a>
Reactivity	Human, Mouse
Predicted	Rat, Dog
Host	Goat
Clonality	Polyclonal
Concentration	100ug/200ul
Isotype	IgG
Calculated MW	20811

**Goat Anti-CBX3 / HP1 Gamma Antibody - Additional Information****Gene ID** 11335**Other Names**

Chromobox protein homolog 3, HECH, Heterochromatin protein 1 homolog gamma, HP1 gamma, Modifier 2 protein, CBX3

**Dilution**WB~~1:1000  
IHC~~1:100~500  
E~~N/A**Format**

0.5 mg IgG/ml in Tris saline (20mM Tris pH7.3, 150mM NaCl), 0.02% sodium azide, with 0.5% bovine serum albumin

**Storage**

Maintain refrigerated at 2-8°C for up to 6 months. For long term storage store at -20°C in small aliquots to prevent freeze-thaw cycles.

**Precautions**

Goat Anti-CBX3 / HP1 Gamma Antibody is for research use only and not for use in diagnostic or therapeutic procedures.

**Goat Anti-CBX3 / HP1 Gamma Antibody - Protein Information****Name** CBX3

**Function**

Seems to be involved in transcriptional silencing in heterochromatin-like complexes. Recognizes and binds histone H3 tails methylated at 'Lys-9', leading to epigenetic repression. May contribute to the association of the heterochromatin with the inner nuclear membrane through its interaction with lamin B receptor (LBR). Involved in the formation of functional kinetochore through interaction with MIS12 complex proteins. Contributes to the conversion of local chromatin to a heterochromatin-like repressive state through H3 'Lys-9' trimethylation, mediates the recruitment of the methyltransferases SUV39H1 and/or SUV39H2 by the PER complex to the E-box elements of the circadian target genes such as PER2 itself or PER1. Mediates the recruitment of NIPBL to sites of DNA damage at double-strand breaks (DSBs) (PubMed:<a href="http://www.uniprot.org/citations/28167679" target="\_blank">28167679</a>).

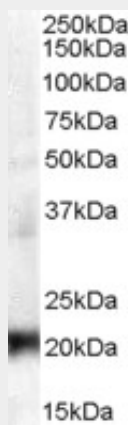
**Cellular Location**

Nucleus. Note=Associates with euchromatin and is largely excluded from constitutive heterochromatin. May be associated with microtubules and mitotic poles during mitosis (Potential).

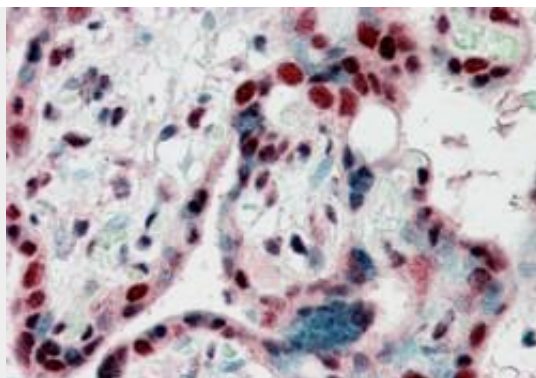
**Goat Anti-CBX3 / HP1 Gamma Antibody - Protocols**

Provided below are standard protocols that you may find useful for product applications.

- [Western Blot](#)
- [Blocking Peptides](#)
- [Dot Blot](#)
- [Immunohistochemistry](#)
- [Immunofluorescence](#)
- [Immunoprecipitation](#)
- [Flow Cytometry](#)
- [Cell Culture](#)

**Goat Anti-CBX3 / HP1 Gamma Antibody - Images**

AF1204a (0.3 µg/ml) staining of A431 lysate (35 µg protein in RIPA buffer). Primary incubation was 1 hour. Detected by chemiluminescence.



AF1204a (2.5 µg/ml) staining of paraffin embedded Human Placenta. Steamed antigen retrieval with citrate buffer pH 6, AP-staining.